

HYMN TO THE FALLEN

(For Concert Band with Optional Chorus)

B \flat BASS T.C.

Music by JOHN WILLIAMS

Transcribed for Concert Band by Paul Lavender

Reverently

2 Two players (w/ St. Bs)

p

7 3 One Tuba (w/St. Bs. and Timp.)

niente *pp*

15 Low W.W./Voices

mp

21 One Tuba (w/St. Bs.) Play - Two players (w/ St. Bs.)

mf *dim.* *p*

28 Move a little (poco rubato)

mp

(sneak breath)

ad lib., do not play 8va bassa

3 *f*

More expansively

B \flat BASS T.C.

Tempo I

43

One Tuba (w/St. Bs.)



(with St. Bs. pizz)



51

Two players (w/ St. Bs)



All



62

Broadly and expansively



72



79

Poco rubato

One Tuba (w/St. Bs.)

Poco Rit.



83

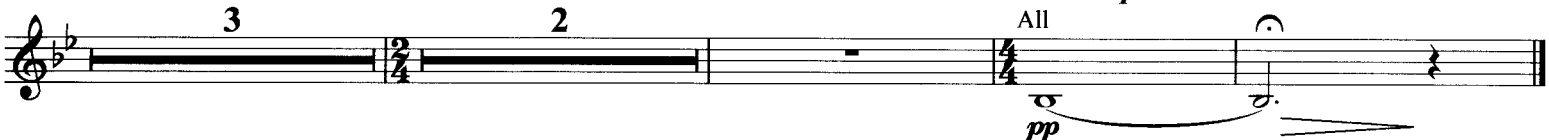
Tempo I (Reverently)

Two players (w/ St. Bs)



Rit.

A Tempo



HYMN TO THE FALLEN

(For Concert Band with Optional Chorus)

B \flat BASS B.C.

Music by JOHN WILLIAMS

Transcribed for Concert Band by Paul Lavender

Reverently
2 Two players (w/ St. Bs)
p

7 3 One Tuba (w/St. Bs. and Timp.)
niente *pp*

15 Low W.W./Voices
mp

21 Play - One Tuba (w/St. Bs.) *mf* *dim.* Two players (w/ St. Bs.) *p*

28 Move a little (poco rubato)
mp

(sneak breath)

ad lib., do not play 8va bassa
3 *f*

More expansively

B♭ BASS B.C.

Tempo I

43

One Tuba (w/St. Bs.)



(with St. Bs. pizz)



51

Two players (w/ St. Bs)



62 Broadly and expansively



72



79

Poco rubato

One Tuba (w/St. Bs.)

Poco Rit.



83

Tempo I (Reverently)

Two players (w/ St. Bs)

