

# AN AMERICAN IN PARIS

Arr. Naohiro Iwai

1st Eb Alto Sax.

Full recording available on/Volledige opname op/  
Enregistrement complet sur/Vollständige Aufnahme auf:  
CD/Cassette AFRICAN SYMPHONY

**Andante**  
*ff* *f* *p* *mp*

**Allegretto** **Andante**  
*mp* *rit. - - p*

**Allegretto** **Disco**  
*mp* *mp* *mf* *f*

**B** **C** **A**

**D Rubato (Slow)**  
*p* *mp* *p* *pp*

**E Blues Tempo**  
*ff* *f* *mp* *f*

**Solo**

**F** *p*

(No Swing) *mf* *f* *poco... rit...* *mp* *p* **G** *Rubato*

**H** *Moderato* *fp* *fp* *poco... accel...* **I** *Bright Swing* *mp* *f* *mp*

**J** *f* *mp* *mf* *f*

**K** *ff* *f*

**L** 1. 2. **M** (No Swing)

*f* *f*

*mf* *D.S. poco... rit...* **Coda** *f* *poco... rit...* *ff* **Grandioso**

*ff*

*ff*

# AN AMERICAN IN PARIS

Full recording available on/Volledige opname op/  
Enregistrement complet sur/Vollständige Aufnahme auf/  
CD/Cassette AFRICAN SYMPHONY

**Andante**

*ff* *f* *p* *mp*

**Allegretto** **Andante**

*mp* *rit... p*

**Allegretto** **Disco**

*mp* *mp* *f*

**B**

*f*

to **C**

*mf* *f* *mf*

*f* *mf*

**D Rubato (Slow)**

*p* *p* *pp*

**E Blues Tempo**

*ff* *f* *mp*

*f* *mf* *mp* *f*

*mp* *mf*

**F** *p*

(No Swing) **G** *Rubato*

*mf* *f* *poco... rit....* *mp* *p*

**H** *Moderato* **I** *Bright Swing*

*fp* *fp* *poco... accel...* *mp* *f* *mp*

*f* *mp* *mf* *f*

**J**

*ff* *f* **K**

*f*

**L** 1. 2. **M** (No Swing)

*f* *f*

*mf* *poco... rit....* **Coda** *f* *poco... rit....* *ff* **Grandioso**

*ff*

*ff*

# AN AMERICAN IN PARIS

Full recording available on/Volledige opname op/  
Enregistrement complet sur/Vollständige Aufnahme auf:  
CD/CassetteAFRICAN SYMPHONY

**Andante**  
*ff* *f* *p* *mp*

**Allegretto** **Andante**  
*mp* *mf* *rit. - -* *p*

**Allegretto** **Disco**  
*mp* *mp* *mf* *f*

**B** **A**  
*f* *f*

**C**  
*mf* *f* *mf* *f*

**D** **E**  
**Rubato(Slow)** **Blues Tempo**  
*mp* *p* *pp* *ff* *f*

**F**  
*mp* *p*



# AN AMERICAN IN PARIS

Arr. Naohiro Iwai

E♭ Baritone Sax.

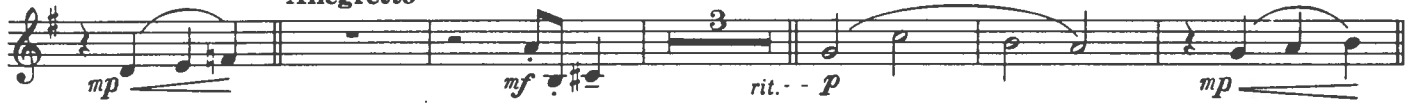
Full recording available on/Volledige opname op/  
Enregistrement complet sur/Vollständige Aufnahme auf:  
CD/Cassette AFRICAN SYMPHONY

**Andante**



**Allegretto**

**Andante**



**Allegretto**

**A Disco**



**B**



**C**

to  $\Phi$



**D Rubato (Slow)**



**E Blues Tempo**



**F**



(No Swing) **Rubato** **G**

mf f mp p mp

Detailed description: This staff contains a melodic line in treble clef with a key signature of two sharps (F# and C#). It begins with a half note G4, followed by quarter notes A4, B4, and C5. A slur covers the next four notes: D5, E5, F#5, and G5. Dynamics include mezzo-forte (mf), forte (f), mezzo-piano (mp), piano (p), and mezzo-piano (mp). A box labeled 'G' is placed above the final measure.

**H** Moderato **I** Bright Swing

fp poco - - - accel. - - - mp

Detailed description: This staff contains a melodic line in treble clef with a key signature of two sharps. It starts with a half note G4, followed by a whole rest. A slur covers the next two notes: A4 and B4. A box labeled 'H' is above the first measure. The second measure contains a whole note G4 with a '2' above it. A slur covers the next two notes: A4 and B4. Dynamics include fortissimo (fp), poco, and mezzo-piano (mp). A box labeled 'I' is above the final measure. The text 'poco - - - accel. - - -' is written below the staff.

f mp f

Detailed description: This staff contains a melodic line in treble clef with a key signature of two sharps. It begins with a half note G4, followed by quarter notes A4, B4, and C5. A slur covers the next four notes: D5, E5, F#5, and G5. Dynamics include forte (f), mezzo-piano (mp), and forte (f).

**J**

mp mf f

Detailed description: This staff contains a melodic line in treble clef with a key signature of two sharps. It begins with a half note G4, followed by quarter notes A4, B4, and C5. A slur covers the next four notes: D5, E5, F#5, and G5. Dynamics include mezzo-piano (mp), mezzo-forte (mf), and forte (f). A box labeled 'J' is above the first measure.

tr

Detailed description: This staff contains a melodic line in treble clef with a key signature of two sharps. It begins with a half note G4, followed by quarter notes A4, B4, and C5. A slur covers the next four notes: D5, E5, F#5, and G5. Trills (tr) are indicated above the notes D5, E5, and F#5. Dynamics include forte (f).

**K**

ff f

Detailed description: This staff contains a melodic line in treble clef with a key signature of two sharps. It begins with a half note G4, followed by quarter notes A4, B4, and C5. A slur covers the next four notes: D5, E5, F#5, and G5. Dynamics include fortissimo (ff) and forte (f). A box labeled 'K' is above the first measure.

Detailed description: This staff contains a melodic line in treble clef with a key signature of two sharps. It begins with a half note G4, followed by quarter notes A4, B4, and C5. A slur covers the next four notes: D5, E5, F#5, and G5. Dynamics include forte (f).

**L** **M** (No Swing)

ff

Detailed description: This staff contains a melodic line in treble clef with a key signature of two sharps. It begins with a half note G4, followed by quarter notes A4, B4, and C5. A slur covers the next four notes: D5, E5, F#5, and G5. Dynamics include fortissimo (ff). A box labeled 'L' is above the first measure, and a box labeled 'M' is above the final measure. The text '(No Swing)' is written below the staff.

**L** **M** (No Swing)

f poco rit. D.S.

Detailed description: This staff contains a melodic line in treble clef with a key signature of two sharps. It begins with a half note G4, followed by quarter notes A4, B4, and C5. A slur covers the next four notes: D5, E5, F#5, and G5. Dynamics include forte (f) and poco ritardando (poco rit.). A box labeled 'L' is above the first measure, and a box labeled 'M' is above the final measure. The text '(No Swing)' is written below the staff. The text 'D.S.' is written below the staff.

**Coda** **Grandioso**

fp poco - - - rit. - - - ff

Detailed description: This staff contains a melodic line in treble clef with a key signature of two sharps. It begins with a half note G4, followed by quarter notes A4, B4, and C5. A slur covers the next four notes: D5, E5, F#5, and G5. Dynamics include fortissimo (fp), poco, ritardando (rit.), and fortissimo (ff). A box labeled 'Coda' is above the first measure, and a box labeled 'Grandioso' is above the final measure.

Detailed description: This staff contains a melodic line in treble clef with a key signature of two sharps. It begins with a half note G4, followed by quarter notes A4, B4, and C5. A slur covers the next four notes: D5, E5, F#5, and G5. Dynamics include fortissimo (ff).

ff

Detailed description: This staff contains a melodic line in treble clef with a key signature of two sharps. It begins with a half note G4, followed by quarter notes A4, B4, and C5. A slur covers the next four notes: D5, E5, F#5, and G5. Dynamics include fortissimo (ff).