

Trombone ténor I

Exercices de justesse : cadences

A **B**

Exercise A and B: A single staff in bass clef with a 4/4 time signature. Exercise A consists of a sequence of notes: G2, A2, B2, C3, D3, E3, F3, G3. Exercise B consists of a sequence of notes: G3, F3, E3, D3, C3, B2, A2, G2. Both exercises end with a double bar line and a key signature change to two flats (Bb, Eb).

9 **C** **D**

Exercise C and D: A single staff in bass clef with a 4/4 time signature. Exercise C consists of a sequence of notes: G2, A2, B2, C3, D3, E3, F3, G3. Exercise D consists of a sequence of notes: G3, F3, E3, D3, C3, B2, A2, G2. Both exercises end with a double bar line and a key signature change to two sharps (F#, C#).

17 **E** **F**

Exercise E and F: A single staff in bass clef with a 4/4 time signature. Exercise E consists of a sequence of notes: G2, A2, B2, C3, D3, E3, F3, G3. Exercise F consists of a sequence of notes: G3, F3, E3, D3, C3, B2, A2, G2. Both exercises end with a double bar line and a key signature change to two flats (Bb, Eb).

25 **G** **H**

Exercise G and H: A single staff in bass clef with a 4/4 time signature. Exercise G consists of a sequence of notes: G2, A2, B2, C3, D3, E3, F3, G3. Exercise H consists of a sequence of notes: G3, F3, E3, D3, C3, B2, A2, G2. Both exercises end with a double bar line and a key signature change to two sharps (F#, C#).

33 **I** **J**

Exercise I and J: A single staff in bass clef with a 4/4 time signature. Exercise I consists of a sequence of notes: G2, A2, B2, C3, D3, E3, F3, G3. Exercise J consists of a sequence of notes: G3, F3, E3, D3, C3, B2, A2, G2. Both exercises end with a double bar line and a key signature change to two flats (Bb, Eb).

41 **K** **L**

Exercise K and L: A single staff in bass clef with a 4/4 time signature. Exercise K consists of a sequence of notes: G2, A2, B2, C3, D3, E3, F3, G3. Exercise L consists of a sequence of notes: G3, F3, E3, D3, C3, B2, A2, G2. Both exercises end with a double bar line and a key signature change to two flats (Bb, Eb).

49 **M** **N**

Exercise M and N: A single staff in bass clef with a 4/4 time signature. Exercise M consists of a sequence of notes: G2, A2, B2, C3, D3, E3, F3, G3. Exercise N consists of a sequence of notes: G3, F3, E3, D3, C3, B2, A2, G2. Both exercises end with a double bar line and a key signature change to two sharps (F#, C#).

57 **O** **P**

A musical staff in bass clef with a key signature of one sharp (F#). The staff contains two measures of music. The first measure is marked with a boxed letter 'O' and contains a sequence of notes: F#4, G4, A4, B4, C5, D5, E5, F#5. The second measure is marked with a boxed letter 'P' and contains a sequence of notes: G4, A4, B4, C5, D5, E5, F#5, G4. The staff ends with a double bar line and a key signature change to two flats (Bb, Eb).

65 **Q**

A musical staff in bass clef with a key signature of two flats (Bb, Eb). The staff contains two measures of music. The first measure is marked with a boxed letter 'Q' and contains a sequence of notes: Bb4, C5, D5, Eb5, F5, G5, Ab5, Bb5. The second measure contains a sequence of notes: C5, D5, Eb5, F5, G5, Ab5, Bb5, C5. The staff ends with a double bar line and a key signature change to one sharp (F#).

73 **R** **S**

A musical staff in bass clef with a key signature of one sharp (F#). The staff contains two measures of music. The first measure is marked with a boxed letter 'R' and contains a sequence of notes: F#4, G4, A4, B4, C5, D5, E5, F#5. The second measure is marked with a boxed letter 'S' and contains a sequence of notes: G4, A4, B4, C5, D5, E5, F#5, G4. The staff ends with a double bar line and a key signature change to two flats (Bb, Eb).

81 **T** **U**

A musical staff in bass clef with a key signature of two flats (Bb, Eb). The staff contains two measures of music. The first measure is marked with a boxed letter 'T' and contains a sequence of notes: Bb4, C5, D5, Eb5, F5, G5, Ab5, Bb5. The second measure is marked with a boxed letter 'U' and contains a sequence of notes: C5, D5, Eb5, F5, G5, Ab5, Bb5, C5. The staff ends with a double bar line and a key signature change to one sharp (F#).

89 **V** **W**

A musical staff in bass clef with a key signature of two sharps (F#, C#). The staff contains two measures of music. The first measure is marked with a boxed letter 'V' and contains a sequence of notes: F#4, G4, A4, B4, C5, D5, E5, F#5. The second measure is marked with a boxed letter 'W' and contains a sequence of notes: G4, A4, B4, C5, D5, E5, F#5, G4. The staff ends with a double bar line and a key signature change to one sharp (F#).

97 **X** **Y**

A musical staff in bass clef with a key signature of one sharp (F#). The staff contains two measures of music. The first measure is marked with a boxed letter 'X' and contains a sequence of notes: F#4, G4, A4, B4, C5, D5, E5, F#5. The second measure is marked with a boxed letter 'Y' and contains a sequence of notes: G4, A4, B4, C5, D5, E5, F#5, G4. The staff ends with a double bar line and a key signature change to two flats (Bb, Eb).

A

B



9

C

D



17

E

F



25

G

H



33

I

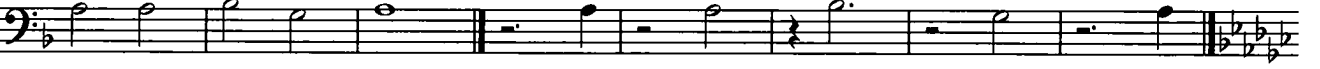
J



41

K

L



49

M

N



57

O

P



2

Trombone ténor II

65

Q



73

R

S



81

T

U



89

V

W



97

X

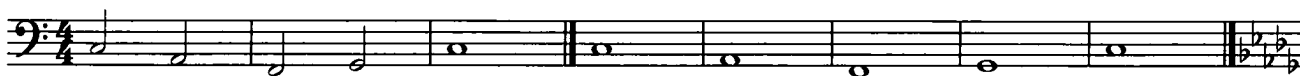
Y



Exercices de justesse : cadences

A

B



9

C

D



17

E

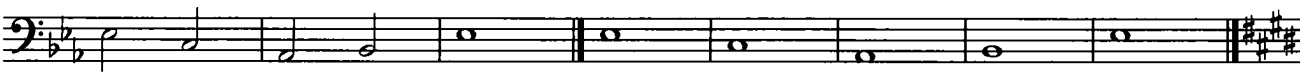
F



25

G

H



33

I

J



41

K

L



49

M

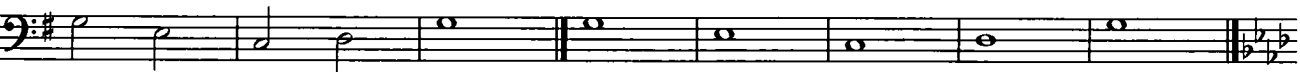
N



57

O

P

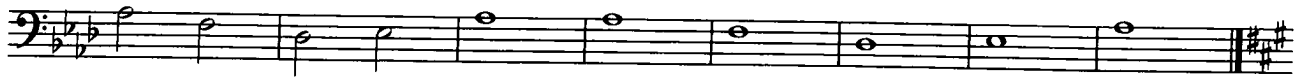


2

Trombone basse

65

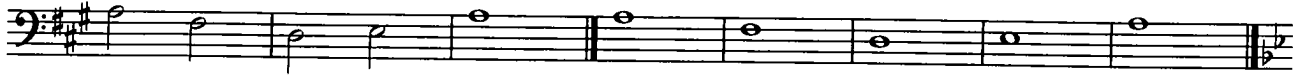
Q



73

R

S



81

T

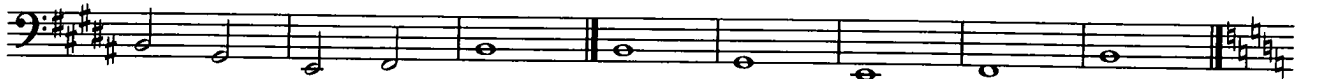
U



89

V

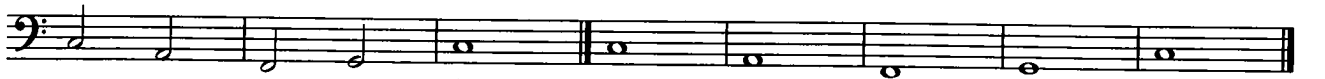
W



97

X

Y



Euphonium I

Exercices de justesse : cadences

A **B**

Exercise A: Treble clef, 4/4 time, key of D major. Notes: D4, E4, F#4, G4, A4, B4, A4, G4, F#4, E4, D4. Exercise B: Treble clef, 4/4 time, key of D major. Notes: D4, E4, F#4, G4, A4, B4, A4, G4, F#4, E4, D4. Both exercises end with a double bar line and a key signature change to B minor.

9 **C** **D**

Exercise C: Treble clef, 4/4 time, key of B minor. Notes: B3, C4, D4, E4, F#4, G4, F#4, E4, D4, C4, B3. Exercise D: Treble clef, 4/4 time, key of B minor. Notes: B3, C4, D4, E4, F#4, G4, F#4, E4, D4, C4, B3. Both exercises end with a double bar line and a key signature change to D major.

17 **E** **F**

Exercise E: Treble clef, 4/4 time, key of D major. Notes: D4, E4, F#4, G4, A4, B4, A4, G4, F#4, E4, D4. Exercise F: Treble clef, 4/4 time, key of D major. Notes: D4, E4, F#4, G4, A4, B4, A4, G4, F#4, E4, D4. Both exercises end with a double bar line and a key signature change to B minor.

25 **G** **H**

Exercise G: Treble clef, 4/4 time, key of B minor. Notes: B3, C4, D4, E4, F#4, G4, F#4, E4, D4, C4, B3. Exercise H: Treble clef, 4/4 time, key of B minor. Notes: B3, C4, D4, E4, F#4, G4, F#4, E4, D4, C4, B3. Both exercises end with a double bar line and a key signature change to D major.

33 **I** **J**

Exercise I: Treble clef, 4/4 time, key of D major. Notes: D4, E4, F#4, G4, A4, B4, A4, G4, F#4, E4, D4. Exercise J: Treble clef, 4/4 time, key of D major. Notes: D4, E4, F#4, G4, A4, B4, A4, G4, F#4, E4, D4. Both exercises end with a double bar line and a key signature change to B minor.

41 **K** **L**

Exercise K: Treble clef, 4/4 time, key of D major. Notes: D4, E4, F#4, G4, A4, B4, A4, G4, F#4, E4, D4. Exercise L: Treble clef, 4/4 time, key of D major. Notes: D4, E4, F#4, G4, A4, B4, A4, G4, F#4, E4, D4. Both exercises end with a double bar line and a key signature change to B minor.

49 **M** **N**

Exercise M: Treble clef, 4/4 time, key of B minor. Notes: B3, C4, D4, E4, F#4, G4, F#4, E4, D4, C4, B3. Exercise N: Treble clef, 4/4 time, key of B minor. Notes: B3, C4, D4, E4, F#4, G4, F#4, E4, D4, C4, B3. Both exercises end with a double bar line and a key signature change to D major.

57 **O** **P**

A musical staff in treble clef with a key signature of two sharps (F# and C#). The melody consists of quarter notes and half notes. The letter 'O' is placed above the first measure, and 'P' is placed above the second measure. The staff ends with a double bar line and a key signature change to one flat (F).

65 **Q**

A musical staff in treble clef with a key signature of one flat (F). The melody consists of quarter notes and half notes. The letter 'Q' is placed above the first measure. The staff ends with a double bar line and a key signature change to two flats (Bb and Eb).

73 **R** **S**

A musical staff in treble clef with a key signature of two sharps (F# and C#). The melody consists of quarter notes and half notes. The letter 'R' is placed above the first measure, and 'S' is placed above the second measure. The staff ends with a double bar line and a key signature change to one flat (F).

81 **T** **U**

A musical staff in treble clef with a key signature of one flat (F). The melody consists of quarter notes and half notes. The letter 'T' is placed above the first measure, and 'U' is placed above the second measure. The staff ends with a double bar line and a key signature change to two flats (Bb and Eb).

89 **V** **W**

A musical staff in treble clef with a key signature of two flats (Bb and Eb). The melody consists of quarter notes and half notes. The letter 'V' is placed above the first measure, and 'W' is placed above the second measure. The staff ends with a double bar line and a key signature change to one sharp (F#).

97 **X** **Y**

A musical staff in treble clef with a key signature of two sharps (F# and C#). The melody consists of quarter notes and half notes. The letter 'X' is placed above the first measure, and 'Y' is placed above the second measure. The staff ends with a double bar line.

Euphonium II

Exercices de justesse : cadences

A **B**

9 **C** **D**

17 **E** **F**

25 **G** **H**

33 **I** **J**

41 **K** **L**

49 **M** **N**

57 **O** **P**

A musical staff in treble clef with a key signature of two sharps (F# and C#). The staff contains two measures of music. The first measure is marked with a boxed letter 'O' and contains a half note G4, a quarter note A4, a quarter note B4, and a half note C5. The second measure is marked with a boxed letter 'P' and contains a half note C5, a quarter note B4, a quarter note A4, and a half note G4. The staff ends with a double bar line and a key signature change to one flat (Bb).

65 **Q**

A musical staff in treble clef with a key signature of one flat (Bb). The staff contains two measures of music. The first measure is marked with a boxed letter 'Q' and contains a half note G4, a quarter note A4, a quarter note B4, and a half note C5. The second measure contains a half note C5, a quarter note B4, a quarter note A4, and a half note G4. The staff ends with a double bar line and a key signature change to two sharps (F# and C#).

73 **R** **S**

A musical staff in treble clef with a key signature of two sharps (F# and C#). The staff contains two measures of music. The first measure is marked with a boxed letter 'R' and contains a half note G4, a quarter note A4, a quarter note B4, and a half note C5. The second measure is marked with a boxed letter 'S' and contains a half note C5, a quarter note B4, a quarter note A4, and a half note G4. The staff ends with a double bar line and a key signature change to one flat (Bb).

81 **T** **U**

A musical staff in treble clef with a key signature of one flat (Bb). The staff contains two measures of music. The first measure is marked with a boxed letter 'T' and contains a half note G4, a quarter note A4, a quarter note B4, and a half note C5. The second measure is marked with a boxed letter 'U' and contains a half note C5, a quarter note B4, a quarter note A4, and a half note G4. The staff ends with a double bar line and a key signature change to two sharps (F# and C#).

89 **V** **W**

A musical staff in treble clef with a key signature of two flats (Bb and Eb). The staff contains two measures of music. The first measure is marked with a boxed letter 'V' and contains a half note G4, a quarter note A4, a quarter note B4, and a half note C5. The second measure is marked with a boxed letter 'W' and contains a half note C5, a quarter note B4, a quarter note A4, and a half note G4. The staff ends with a double bar line and a key signature change to one flat (Bb).

97 **X** **Y**

A musical staff in treble clef with a key signature of two sharps (F# and C#). The staff contains two measures of music. The first measure is marked with a boxed letter 'X' and contains a half note G4, a quarter note A4, a quarter note B4, and a half note C5. The second measure is marked with a boxed letter 'Y' and contains a half note C5, a quarter note B4, a quarter note A4, and a half note G4. The staff ends with a double bar line.

Exercices de justesse : cadences

A **B**

Staff A-B: Treble clef, key signature of two sharps (F# and C#), 4/4 time signature. The staff contains two measures of music. The first measure starts with a boxed letter 'A' and contains a half note G4, a quarter note A4, and a quarter note B4. The second measure starts with a boxed letter 'B' and contains a half note C5, a quarter note B4, and a quarter note A4. The staff ends with a double bar line and a key signature change to one sharp (F#).

9 **C** **D**

Staff C-D: Treble clef, key signature of one sharp (F#), 4/4 time signature. The staff contains two measures of music. The first measure starts with a boxed letter 'C' and contains a half note G4, a quarter note A4, and a quarter note B4. The second measure starts with a boxed letter 'D' and contains a half note C5, a quarter note B4, and a quarter note A4. The staff ends with a double bar line and a key signature change to two sharps (F# and C#).

17 **E** **F**

Staff E-F: Treble clef, key signature of two sharps (F# and C#), 4/4 time signature. The staff contains two measures of music. The first measure starts with a boxed letter 'E' and contains a half note G4, a quarter note A4, and a quarter note B4. The second measure starts with a boxed letter 'F' and contains a half note C5, a quarter note B4, and a quarter note A4. The staff ends with a double bar line and a key signature change to one sharp (F#).

25 **G** **H**

Staff G-H: Treble clef, key signature of one sharp (F#), 4/4 time signature. The staff contains two measures of music. The first measure starts with a boxed letter 'G' and contains a half note G4, a quarter note A4, and a quarter note B4. The second measure starts with a boxed letter 'H' and contains a half note C5, a quarter note B4, and a quarter note A4. The staff ends with a double bar line and a key signature change to two sharps (F# and C#).

33 **I** **J**

Staff I-J: Treble clef, key signature of two sharps (F# and C#), 4/4 time signature. The staff contains two measures of music. The first measure starts with a boxed letter 'I' and contains a half note G4, a quarter note A4, and a quarter note B4. The second measure starts with a boxed letter 'J' and contains a half note C5, a quarter note B4, and a quarter note A4. The staff ends with a double bar line and a key signature change to one sharp (F#).

41 **K** **L**

Staff K-L: Treble clef, key signature of one sharp (F#), 4/4 time signature. The staff contains two measures of music. The first measure starts with a boxed letter 'K' and contains a half note G4, a quarter note A4, and a quarter note B4. The second measure starts with a boxed letter 'L' and contains a half note C5, a quarter note B4, and a quarter note A4. The staff ends with a double bar line and a key signature change to two sharps (F# and C#).

49 **M** **N**

Staff M-N: Treble clef, key signature of two sharps (F# and C#), 4/4 time signature. The staff contains two measures of music. The first measure starts with a boxed letter 'M' and contains a half note G4, a quarter note A4, and a quarter note B4. The second measure starts with a boxed letter 'N' and contains a half note C5, a quarter note B4, and a quarter note A4. The staff ends with a double bar line and a key signature change to one sharp (F#).

57 **O** **P**

A musical staff in treble clef with a key signature of three sharps (F#, C#, G#). The staff contains two measures of music for the letter 'O' and two measures for the letter 'P'. The notes for 'O' are G4, A4, B4, and C5. The notes for 'P' are G4, F4, E4, and D4. The piece ends with a double bar line and a repeat sign.

65 **Q**

A musical staff in treble clef with a key signature of one flat (F). The staff contains two measures of music for the letter 'Q'. The notes are G4, A4, B4, and C5. The piece ends with a double bar line and a repeat sign.

73 **R** **S**

A musical staff in treble clef with a key signature of three sharps (F#, C#, G#). The staff contains two measures of music for the letter 'R' and two measures for the letter 'S'. The notes for 'R' are G4, A4, B4, and C5. The notes for 'S' are G4, F4, E4, and D4. The piece ends with a double bar line and a repeat sign.

81 **T** **U**

A musical staff in treble clef with a key signature of one sharp (F#). The staff contains two measures of music for the letter 'T' and two measures for the letter 'U'. The notes for 'T' are G4, A4, B4, and C5. The notes for 'U' are G4, F4, E4, and D4. The piece ends with a double bar line and a repeat sign.

89 **V** **W**

A musical staff in treble clef with a key signature of two flats (Bb, Eb). The staff contains two measures of music for the letter 'V' and two measures for the letter 'W'. The notes for 'V' are G4, A4, B4, and C5. The notes for 'W' are G4, F4, E4, and D4. The piece ends with a double bar line and a repeat sign.

97 **X** **Y**

A musical staff in treble clef with a key signature of three sharps (F#, C#, G#). The staff contains two measures of music for the letter 'X' and two measures for the letter 'Y'. The notes for 'X' are G4, A4, B4, and C5. The notes for 'Y' are G4, F4, E4, and D4. The piece ends with a double bar line and a repeat sign.

Exercices de justesse : cadences

A **B**

Exercise A-B: A musical staff in 4/4 time with a key signature of one sharp (F#). It contains two measures of music. Measure A starts with a quarter note F#4, followed by quarter notes G4, A4, and B4. Measure B starts with a quarter note C5, followed by quarter notes B4, A4, and G4. The staff ends with a double bar line and a key signature change to one flat (Bb).

9 **C** **D**

Exercise C-D: A musical staff in 4/4 time with a key signature of two flats (Bb, Eb). It contains two measures of music. Measure C starts with a quarter note Bb3, followed by quarter notes Ab3, Gb3, and Fb3. Measure D starts with a quarter note Eb3, followed by quarter notes D3, C3, and Bb2. The staff ends with a double bar line and a key signature change to two sharps (F#, C#).

17 **E** **F**

Exercise E-F: A musical staff in 4/4 time with a key signature of three sharps (F#, C#, G#). It contains two measures of music. Measure E starts with a quarter note F#4, followed by quarter notes G#4, A4, and B4. Measure F starts with a quarter note C5, followed by quarter notes B4, A4, and G#4. The staff ends with a double bar line and a key signature change to one flat (Bb).

25 **G** **H**

Exercise G-H: A musical staff in 4/4 time with a key signature of three sharps (F#, C#, G#). It contains two measures of music. Measure G starts with a quarter note F#4, followed by quarter notes G#4, A4, and B4. Measure H starts with a quarter note C5, followed by quarter notes B4, A4, and G#4. The staff ends with a double bar line and a key signature change to two sharps (F#, C#).

33 **I** **J**

Exercise I-J: A musical staff in 4/4 time with a key signature of four sharps (F#, C#, G#, D#). It contains two measures of music. Measure I starts with a quarter note F#4, followed by quarter notes G#4, A4, and B4. Measure J starts with a quarter note C5, followed by quarter notes B4, A4, and G#4. The staff ends with a double bar line and a key signature change to one sharp (F#).

41 **K** **L**

Exercise K-L: A musical staff in 4/4 time with a key signature of one sharp (F#). It contains two measures of music. Measure K starts with a quarter note F#4, followed by quarter notes G4, A4, and B4. Measure L starts with a quarter note C5, followed by quarter notes B4, A4, and G4. The staff ends with a double bar line and a key signature change to two flats (Bb, Eb).

49 **M** **N**

Exercise M-N: A musical staff in 4/4 time with a key signature of two flats (Bb, Eb). It contains two measures of music. Measure M starts with a quarter note Bb3, followed by quarter notes Ab3, Gb3, and Fb3. Measure N starts with a quarter note Eb3, followed by quarter notes D3, C3, and Bb2. The staff ends with a double bar line and a key signature change to two sharps (F#, C#).

57 **O** **P**

A musical staff in treble clef with a key signature of two sharps (F# and C#). The staff contains a sequence of notes: G4, A4, B4, C5, D5, E5, F#5, G5, A5, B5, C6, D6, E6, F#6, G6, A6, B6, C7. A double bar line is placed after the note G5. The letter 'O' is in a box above the first note, and 'P' is in a box above the note G5.

65 **Q**

A musical staff in treble clef with a key signature of two flats (Bb and Eb). The staff contains a sequence of notes: G4, A4, B4, C5, D5, E5, F#5, G5, A5, B5, C6, D6, E6, F#6, G6, A6, B6, C7. A double bar line is placed after the note G5. The letter 'Q' is in a box above the first note.

73 **R** **S**

A musical staff in treble clef with a key signature of three sharps (F#, C#, G#). The staff contains a sequence of notes: G4, A4, B4, C5, D5, E5, F#5, G5, A5, B5, C6, D6, E6, F#6, G6, A6, B6, C7. A double bar line is placed after the note G5. The letter 'R' is in a box above the first note, and 'S' is in a box above the note G5.

81 **T** **U**

A musical staff in treble clef with a key signature of two flats (Bb and Eb). The staff contains a sequence of notes: G4, A4, B4, C5, D5, E5, F#5, G5, A5, B5, C6, D6, E6, F#6, G6, A6, B6, C7. A double bar line is placed after the note G5. The letter 'T' is in a box above the first note, and 'U' is in a box above the note G5.

89 **V** **W**

A musical staff in treble clef with a key signature of three flats (Bb, Eb, Ab). The staff contains a sequence of notes: G4, A4, B4, C5, D5, E5, F#5, G5, A5, B5, C6, D6, E6, F#6, G6, A6, B6, C7. A double bar line is placed after the note G5. The letter 'V' is in a box above the first note, and 'W' is in a box above the note G5.

97 **X** **Y**

A musical staff in treble clef with a key signature of two sharps (F# and C#). The staff contains a sequence of notes: G4, A4, B4, C5, D5, E5, F#5, G5, A5, B5, C6, D6, E6, F#6, G6, A6, B6, C7. A double bar line is placed after the note G5. The letter 'X' is in a box above the first note, and 'Y' is in a box above the note G5.

Tuba

Exercices de justesse : cadences

A **B**

Exercise A (measures 1-5) and Exercise B (measures 6-10) are written in bass clef, 4/4 time. Exercise A consists of a descending eighth-note scale: G2, F2, E2, D2, C2. Exercise B consists of a descending quarter-note scale: B1, A1, G1, F1, E1, D1, C1.

9 **C** **D**

Exercise C (measures 11-15) and Exercise D (measures 16-20) are written in bass clef, 4/4 time. Exercise C consists of a descending eighth-note scale: B1, A1, G1, F1, E1, D1, C1. Exercise D consists of a descending quarter-note scale: B1, A1, G1, F1, E1, D1, C1.

17 **E** **F**

Exercise E (measures 21-25) and Exercise F (measures 26-30) are written in bass clef, 4/4 time. Exercise E consists of a descending eighth-note scale: B1, A1, G1, F1, E1, D1, C1. Exercise F consists of a descending quarter-note scale: B1, A1, G1, F1, E1, D1, C1.

25 **G** **H**

Exercise G (measures 31-35) and Exercise H (measures 36-40) are written in bass clef, 4/4 time. Exercise G consists of a descending eighth-note scale: B1, A1, G1, F1, E1, D1, C1. Exercise H consists of a descending quarter-note scale: B1, A1, G1, F1, E1, D1, C1.

33 **I** **J**

Exercise I (measures 41-45) and Exercise J (measures 46-50) are written in bass clef, 4/4 time. Exercise I consists of a descending eighth-note scale: B1, A1, G1, F1, E1, D1, C1. Exercise J consists of a descending quarter-note scale: B1, A1, G1, F1, E1, D1, C1.

41 **K** **L**

Exercise K (measures 51-55) and Exercise L (measures 56-60) are written in bass clef, 4/4 time. Exercise K consists of a descending eighth-note scale: B1, A1, G1, F1, E1, D1, C1. Exercise L consists of a descending quarter-note scale: B1, A1, G1, F1, E1, D1, C1.

49 **M** **N**

Exercise M (measures 61-65) and Exercise N (measures 66-70) are written in bass clef, 4/4 time. Exercise M consists of a descending eighth-note scale: B1, A1, G1, F1, E1, D1, C1. Exercise N consists of a descending quarter-note scale: B1, A1, G1, F1, E1, D1, C1.

Exercices de justesse : cadences

A **B**

Exercise A (measures 1-3) and Exercise B (measures 4-6) are written in 4/4 time. Exercise A features a sequence of chords: a triad of G4, B4, D5 in the right hand over a bass line of G2, B2, D3; a triad of A4, C5, E5 in the right hand over a bass line of A2, C3, E3; and a triad of B4, D5, F#5 in the right hand over a bass line of B2, D3, F#3. Exercise B features a sequence of chords: a triad of C5, E5, G5 in the right hand over a bass line of C2, E2, G2; a triad of D5, F#5, A5 in the right hand over a bass line of D2, F#2, A2; and a triad of E5, G5, B5 in the right hand over a bass line of E2, G2, B2.

7 **C**

Exercise C (measures 7-11) is written in 4/4 time. It begins with a sequence of chords: a triad of F#4, A4, C5 in the right hand over a bass line of F#2, A2, C3; a triad of G4, B4, D5 in the right hand over a bass line of G2, B2, D3; and a triad of A4, C5, E5 in the right hand over a bass line of A2, C3, E3. Exercise C (measures 10-11) features a sequence of chords: a triad of B4, D5, F#5 in the right hand over a bass line of B2, D3, F#3; a triad of C5, E5, G5 in the right hand over a bass line of C2, E2, G2; and a triad of D5, F#5, A5 in the right hand over a bass line of D2, F#2, A2.

12 **D** **E**

Exercise D (measures 12-16) and Exercise E (measures 17) are written in 4/4 time. Exercise D features a sequence of chords: a triad of C5, E5, G5 in the right hand over a bass line of C2, E2, G2; a triad of D5, F#5, A5 in the right hand over a bass line of D2, F#2, A2; a triad of E5, G5, B5 in the right hand over a bass line of E2, G2, B2; and a triad of F#5, A5, C6 in the right hand over a bass line of F#2, A2, C3. Exercise E (measures 17) features a triad of G4, B4, D5 in the right hand over a bass line of G2, B2, D3.

18 **F**

Exercise F (measures 18-23) is written in 4/4 time. It begins with a sequence of chords: a triad of A4, C5, E5 in the right hand over a bass line of A2, C3, E3; a triad of B4, D5, F#5 in the right hand over a bass line of B2, D3, F#3; and a triad of C5, E5, G5 in the right hand over a bass line of C2, E2, G2. Exercise F (measures 21-23) features a sequence of chords: a triad of D5, F#5, A5 in the right hand over a bass line of D2, F#2, A2; a triad of E5, G5, B5 in the right hand over a bass line of E2, G2, B2; and a triad of F#5, A5, C6 in the right hand over a bass line of F#2, A2, C3.

25 **G** **H**

31 **I**

36 **J**

41 **K** **L**

47 **M**

52 **N**

Musical score for system N, measures 52-56. The key signature is three flats (B-flat, E-flat, A-flat). The melody in the treble clef consists of quarter notes and half notes, with some rests. The bass line consists of quarter notes and half notes. A double bar line is at the end of measure 56.

57 **O** **P**

Musical score for system O and P, measures 57-63. Measure 57 is marked with **O**. Measures 58-63 are marked with **P**. The key signature changes to two flats (B-flat, E-flat) at measure 58. The melody in the treble clef features chords and quarter notes. The bass line consists of quarter notes and half notes. A double bar line is at the end of measure 63.

64 **Q**

Musical score for system Q, measures 64-69. The key signature is two flats (B-flat, E-flat). The melody in the treble clef features chords and quarter notes. The bass line consists of quarter notes and half notes. A double bar line is at the end of measure 69.

70 **R**

Musical score for system R, measures 70-75. The key signature changes to one flat (B-flat) at measure 70. The melody in the treble clef features chords and quarter notes. The bass line consists of quarter notes and half notes. A double bar line is at the end of measure 75.

76 **S**

Musical score for system S, measures 76-81. The key signature changes to one sharp (F-sharp) at measure 76. The melody in the treble clef features chords and quarter notes. The bass line consists of quarter notes and half notes. A double bar line is at the end of measure 81.